

SUNDECK
— YACHTS —

700

The Sundeck 700 offers exponentially more interior and exterior living space for those that want more. Thanks to the 18' 4" beam, there's room for a foredeck jacuzzi spa that includes a sunpad cover, along with a C-shaped settee with table. Sunshades cover this area as well as the huge flybridge deck table or opt for the flybridge hardtop. If needed, the 700 can run at planning speeds, up to 25 knots.



Sundeck 700



Ergonomically designed for comfort and leisure, the Sundeck 700 is the perfect long range fast trawler luxury yacht to discover the rewarding part of life.

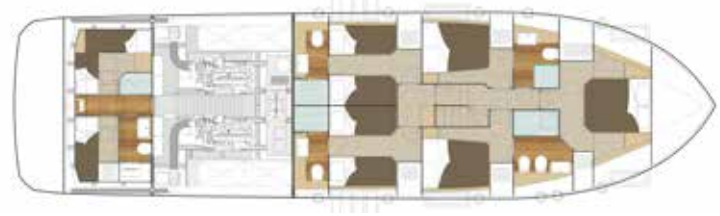




MAIN DECK



LOWER DECK
4 cabins



LOWER DECK
5 cabins



L.O.A	21,55 m	70' 08"
Beam	5,60 m	18' 04"
Draft	1,50 m	4' 9"
Fuel Tank	5000 l	1320 US gal.
Water Tank	1800 l	475 US gal.
Engines Options		
2 x MAN 850hp	1,700 hp - (max 25 knots)	
2 x CAT C12.9 850hp	1,700 hp - (max 25 knots)	
2 x MAN 1000hp	2,000 hp - (max 27 knots)	
2 x CAT C12.9 1000hp	2,000 hp - (max 27 knots)	
Displacement speed / range	10,5 knots - 1.350 nm range	
Cruising Speed / range	17 knots - 450 nm range	
Max Speed / range	25 knots - 400 nm range	
Certification	CE-A	
Staterooms (cabins - heads)	4/5 - 4 + 2	

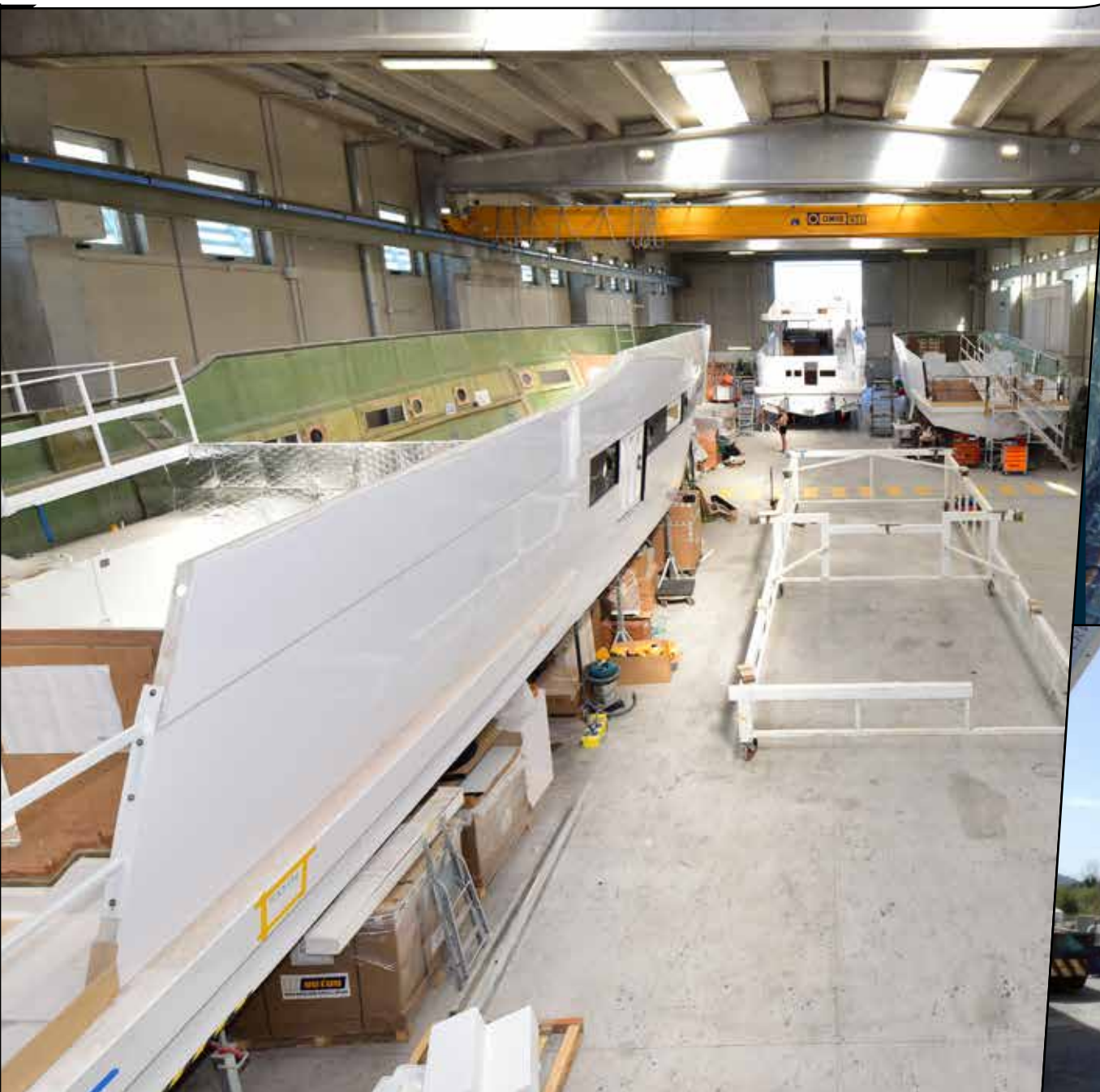
CONSTRUCTION OF DISTINCTION

Modern building techniques by traditional craftsmen

Skilled craftsmen with years of instilled experience still know the value of working with their hands. Crafting a Sundeck Yacht requires a special touch, to feel the precision, appreciate the finish and understand each component. They gain a sense of the finesse of each yacht. The strength of each hull is inherent in the controlled resin infusion and vacuum-bagging processes of each fiberglass component. Construction of each fiberglass mold is supported by a proven design carved on a 5-axis CNC (computer numerical control) milling machine, for precision cutting and sizing.



Solid fiberglass hulls and foam-cored infused stringers add rigidity to the forms. Foam-cored bulkheads and honey-combed backings help to reduce weight. With production facilities in Fano and Ravenna, Italy, Sundeck Yachts sources and crafts most components themselves, maintaining a high level of quality control throughout the build process. With the current facilities, Sundeck Yachts can be crafting up to 10 yachts simultaneously, at varying levels of completion. Launching and commissioning of each yacht is performed at each yard.





SUNDECK COLLECTION

The Sundeck Yachts fleet includes custom designed Open, Sport and Cruising yachts from 43 to 85 feet, as well as the 124-foot (38 meters) megayacht.



*430
OPEN*



480



580



*580
SPORT*



700



850



*38
METRI*



SUNDECK ITALY

HEADQUARTERS

Calata Porto Turistico 47, Lavagna (GE)

Tel +39 0185 044 781

Mail: info@sundeck.yachts

BENELUX OFFICE

Tel. +39 0185 044 781

Mail: benelux@sundeck.yachts

FRANCE OFFICE

Golfe Juan, Vallauris

Tel. +39 0185 044 781

Mail: france@sundeck.yachts

SPAIN OFFICE

Palma De Mallorca

Tel. +39 0185 044 781

Mail: balearic@sundeck.yachts

SUNDECK U.S.A.

1515 SE 17th Street Fort Lauderdale (FL)

Tel: + 1 954 470 1043

Mail: usa@sundeck.yachts

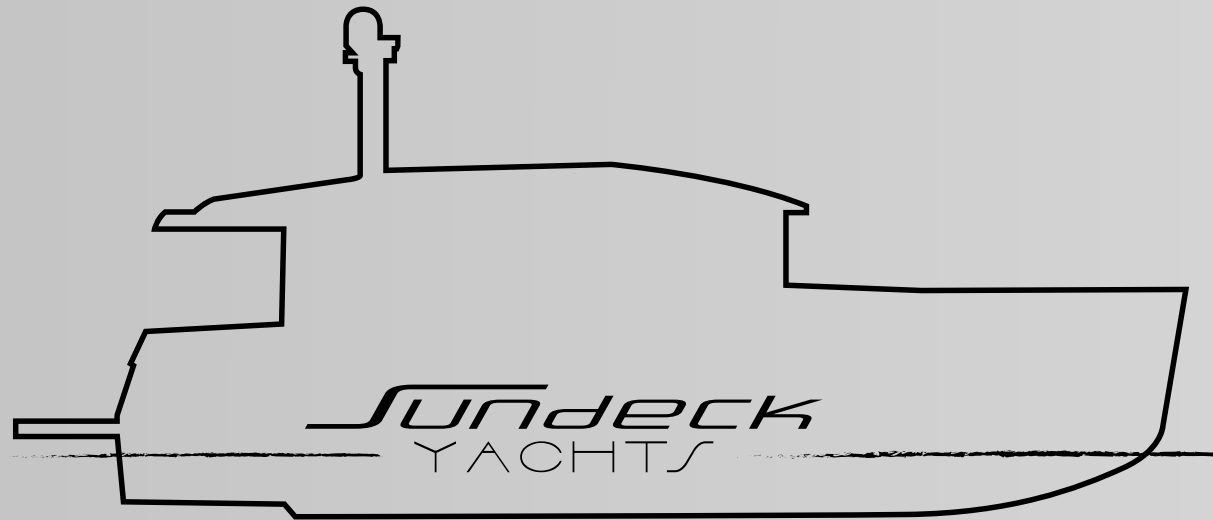
LEGAL NOTICE

"Some of the items listed in the present brochure or illustrated in any picture herein contained, might not be included as standard. This brochure does not constitute by itself any contractual offer for any vessel sale or building order even if part of or attached to another document. All information herein provided including, without limitation, the technical data, performance, pictures, schemes, and drawings are merely indicative and they never constitute any obligation of the builder or definition about standard and optional contents of the vessel built. The only contractually valid indications and Builder product obligations or warranties are the ones listed in the purchase and sales contract or the Limited Warranty valid and applicable at the time. Despite the Builder's good faith, the information herein may not cover all details or modifications carried out on the product post sale. Further, the information herein contained may also be describing characteristics that

no longer exist or which are no longer present or even available anymore.

All pictures, drawings, and schemes are to be intended with sole intention of enhancing the text comprehension.

Due to different characteristics of any boat that is built, the Builder declines any responsibility about the effective use of the vessels, or any purpose for which they might be purchased, based on the application illustrated. Vessel use is strictly recommended only after having read the vessel's Owner's Manual, and the Builder declines any responsibility regarding the use of the vessel performed in violation of the terms and conditions of the Owner's Manual. This brochure is property and copyright of the Builder: any attempt of copying or modifying or forwarding the brochure to third parties, either partially or fully, regardless of the purpose is strictly forbidden".



www.sundeck.yachts - info@sundeck.yachts