

*SUNDECK*  
— YACHTS —

SY 430S



*SUNDECK*  
— YACHTS —

BEYOND  
THE LIMITS OF  
YOUR IMAGINATION

*The successes of life can be measured by the rewards achieved.  
Thanks to those successes there is one more reward to crown a  
life well lived.  
That is to enjoy life on a Sundeck Yacht.*

SUNDECK 430S



# LIVING IN STYLE

## Balancing Life's True Pleasures

The 430 S from Sundeck Yachts is the latest addition to the fleet. Built on a solid and seaworthy vacuum infused, CE "A" class hull, expressively developed for the new project, the 430 S combines a sport fishing heritage with plenty of amenities normally reserved to much more big units.

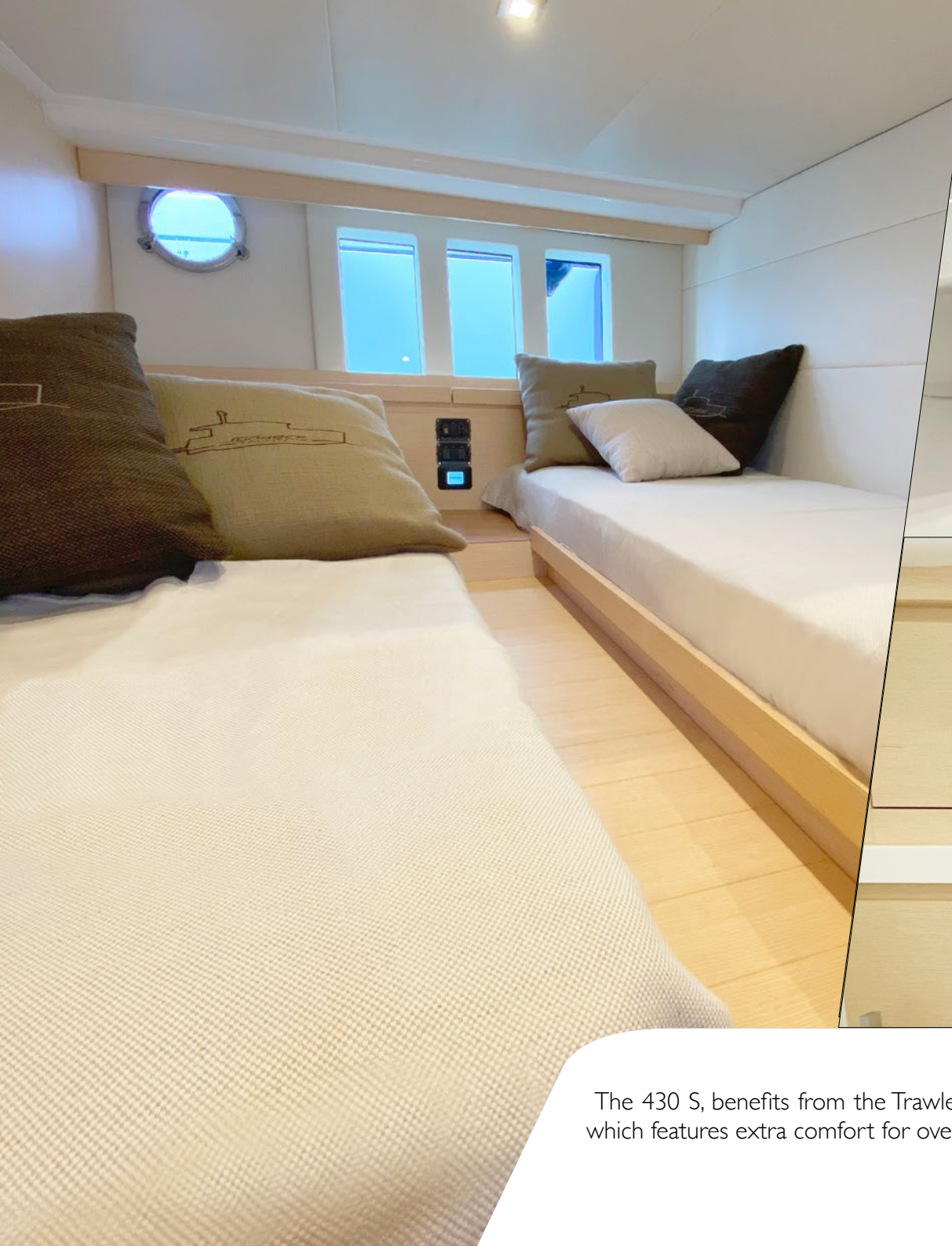


The unique designed helm station and cockpit lounge are conveniently protected by the carbon fiber built hard top/ superstructure, which contains a fan coil unit for clima into the its room as well. The foredeck provides a great space for sun bed and the walk around design and the recessed windlass, at bow, really enhance safety on board. The standard provided full strataglass canvas enclosure, converts the 430 S even on a real Sedan YACHT on demand!









The 430 S, benefits from the Trawler family feeling, offering you an all-weather and all purpose express cruiser which features extra comfort for overnighters as well, thanks to the two lower deck cabins and two bathrooms.

Its huge aft cockpit can be fitted accordingly to the owner's wish, either to convivially seat plenty of guests or equipped for the more avid sport fishermen.





The flush deck and raised fold-away wick are signature of brand, as well as the over sized sunbed on the foredeck.

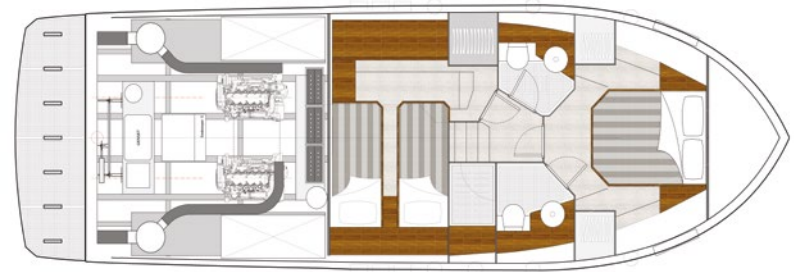
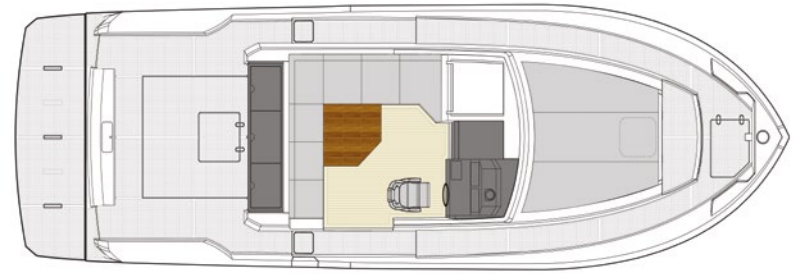
The full walkaround design deck with recessed handrails, provides perfect safety and great comfort.





A complete summer galley, available at rear deck, will make preparing quick summer meals and aperitifs easy and great fun. The 430 S is available with shaft propulsion or outboard drives options (SEE 440s), for a top speed exceeding 40 knots, depending on configurations. Gyro stabilization is not missing as an option, for most demanding clients. With its undoubtedly modern flare and sturdy cross-over appeal, the 430 S, pioneering a new line-up (it will shortly be joined by the 530s), is ready to achieve more and more likes!"





L.O.A	13,20 m	43' 03"
Beam	4,24 m	13' 10"
Draft	1,00 m	3' 2"
Fuel Tank	2000 l	528 US gal.
Water Tank	500 l	132 US gal.
Engines Options		
2 x FTP N67 570hp	1,140 hp - (max 38 knots)	
2 x Cummins QSB6.7 550hp	1,100 hp - (max 36 knots)	
2 x Mercury 6.7 550hp	1,100 hp - (max 36 knots)	
Displacement speed / range	8,5 knots - 1,500 nm range	
Cruising Speed / range	30 knots - 600 nm range	
Max Speed / range	38 knots - 450 nm range	
Certification	CE-A	
Staterooms (cabins - heads)	2 + 2	

# CONSTRUCTION OF DISTINCTION

## Modern building techniques by traditional craftsmen

Skilled craftsmen with years of instilled experience still know the value of working with their hands. Crafting a Sundeck Yacht requires a special touch, to feel the precision, appreciate the finish and understand each component. They gain a sense of the finesse of each yacht. The strength of each hull is inherent in the controlled resin infusion and vacuum-bagging processes of each fiberglass component. Construction of each fiberglass mold is supported by a proven design carved on a 5-axis CNC (computer numerical control) milling machine, for precision cutting and sizing.





Solid fiberglass hulls and foam-cored infused stringers add rigidity to the forms. Foam-cored bulkheads and honey-combed backings help to reduce weight. With production facilities in Fano and Ravenna, Italy, Sundeck Yachts sources and crafts most components themselves, maintaining a high level of quality control throughout the build process. With the current facilities, Sundeck Yachts can be crafting up to 10 yachts simultaneously, at varying levels of completion.





# SUNDECK COLLECTION

The Sundeck Yachts fleet includes custom designed Open, Sport and Cruising yachts from 43 to 85 feet, as well as the 124-foot (38 meters) megayacht.



*430  
SPORT*



*430  
FISH*



*430  
CRUISE*



*440  
SPORT*



*530*



*580*



*580 H.T.*



*620*



*700*



*38  
Metri*



## SUNDECK ITALY

### HEADQUARTERS

Calata Porto Turistico 47, Lavagna (GE)

Tel +39 0185 044 781

Mail: [info@sundeck.yachts](mailto:info@sundeck.yachts)

## BENELUX OFFICE

Tel. +39 0185 044 781

Mail: [benelux@sundeck.yachts](mailto:benelux@sundeck.yachts)

## FRANCE OFFICE

Golfe Juan, Vallauris

Tel. +39 0185 044 781

Mail: [france@sundeck.yachts](mailto:france@sundeck.yachts)

## SPAIN OFFICE

Palma De Mallorca

Tel. +39 0185 044 781

Mail: [balearic@sundeck.yachts](mailto:balearic@sundeck.yachts)

## SUNDECK U.S.A.

1515 SE 17th Street Fort Lauderdale (FL)

Tel: + 1 954 470 1043

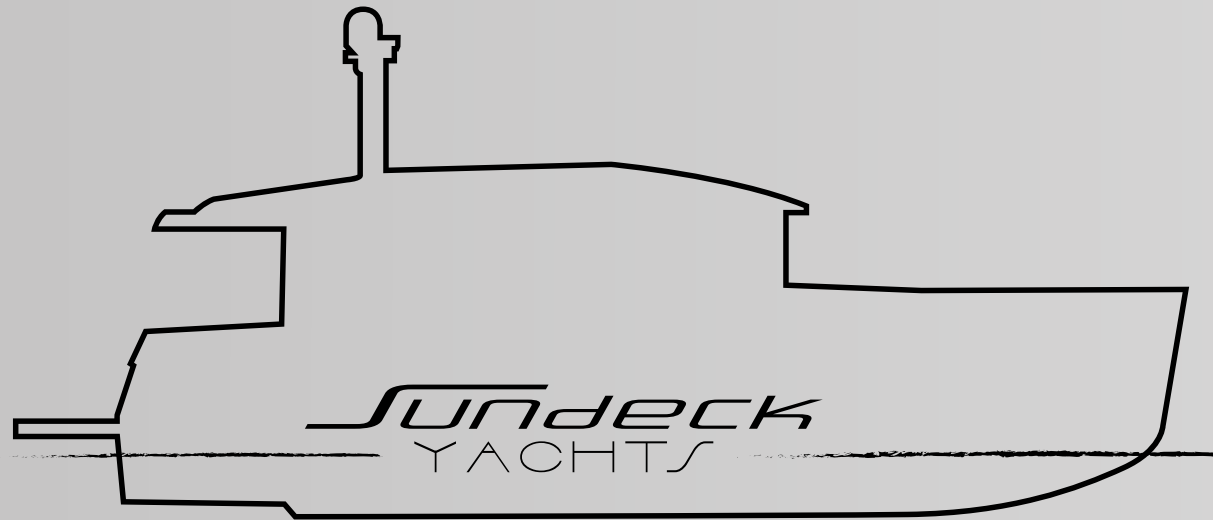
Mail: [usa@sundeck.yachts](mailto:usa@sundeck.yachts)

## LEGAL NOTICE

"Some of the items listed in the present brochure or illustrated in any picture herein contained, might not be included as standard. This brochure does not constitute by itself any contractual offer for any vessel sale or building order even if part of or attached to another document. All information herein provided including, without limitation, the technical data, performance, pictures, schemes, and drawings are merely indicative and they never constitute any obligation of the builder or definition about standard and optional contents of the vessel built. The only contractually valid indications and Builder product obligations or warranties are the ones listed in the purchase and sales contract or the Limited Warranty valid and applicable at the time. Despite the Builder's good faith, the information herein may not cover all details or modifications carried out on the product post sale. Further, the information herein contained may also be describing characteristics that

no longer exist or which are no longer present or even available anymore.

All pictures, drawings, and schemes are to be intended with sole intention of enhancing the text comprehension. Due to different characteristics of any boat that is built, the Builder declines any responsibility about the effective use of the vessels, or any purpose for which they might be purchased, based on the application illustrated. Vessel use is strictly recommended only after having read the vessel's Owner's Manual, and the Builder declines any responsibility regarding the use of the vessel performed in violation of the terms and conditions of the Owner's Manual. This brochure is property and copyright of the Builder: any attempt of copying or modifying or forwarding the brochure to third parties, either partially or fully, regardless of the purpose is strictly forbidden".



[www.sundeck.yachts](http://www.sundeck.yachts) - [info@sundeck.yachts](mailto:info@sundeck.yachts)